

COMPLETE SOLUTIONS

SOLUTIONS OF LIGHTING

FOR ELECTRICAL
ENCLOSURES



LIGHTING FOR ELECTRICAL ENCLOSURES	4
SLIM LINE LIGHT 10W	5
FLUORESCENT LIGHTING SCHUKO 11W	6
LED LIGHTING SCHUKO 5W	7
LED LIGHTING WITH MOTION SENSOR 2.5W	8
LED LIGHTING MULTIPOSITION 6W	9



Paso del Prao, 6. 01320 Oyón (Álava), Spain
Phone +34 945 601 381
comercial@delvalle.es | www.delvallebox.com



WE PUT AT YOUR DISPOSAL

We offer over **45 years** providing solutions to demanding customers who require very specific characteristics and behaviour according to the sector and their needs.

WHEREVER YOU GO

We are committed to working closely with our customers, providing them with **exceptional service** and offering an advanced and extensive range of products with very competitive prices.

HIGH STANDARD OF QUALITY AND SERVICES

We only use materials provided by companies who offer the very **highest quality**, suitable and certified products. Our success is due to top quality assurance: ISO 9001, SGS, UL, TÜV, ISO 14000 and Ohsas 18001.

CUSTOMIZE TOTALLY YOUR ENCLOSURE

Our production systems can give custom-made solutions **on demand**. Every colour from RAL chart is available to be personalized. A variety of protection standards thanks to our own painting facilities.



100%

Diseñado y fabricado íntegramente en España

Entirely designed and manufactures in Spain

CONTACT US

Confidentiality, reliability & quality

www.delvallebox.com

comercial@delvalle.es

+34 945 601 381

ALSO ONLINE

Please contact our technical sales department

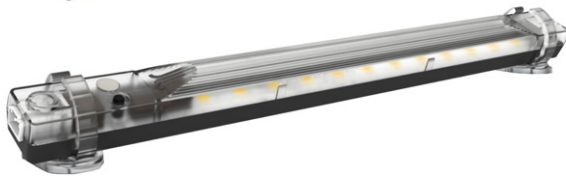
A team of professionals with high experience and ability to solve all your queries



LIGHTING FOR ELECTRICAL ENCLOSURES



Examples



We have Low Consumption LED Luminaires

Delvalle compact luminaires are specially designed for use in electrical cabinets. We have low consumption luminaires with LED or the fluorescent tube standard.

With screw fixing both on the width side and the narrow side, optionally this fixing can be magnetic by magnet.

They can also have an integrated power socket, which allows you to connect additional electrical devices.

Different models and consumptions depending on the chosen cabinet, with plug, for UL, with motion sensor and different powers, frequency, lumens, etc.

REF: MVSL01 (Luminaire support)



[FOR MORE INFORMATION CLICK HERE](#)



SLIM LINE LIGHT 10W



Example



Slim Line Light Tube

Compact light, specially design for electrical enclosures. Provide high brightness with low power consumption. Use an integred electronic control equipment, instead of a conventional electro-magnetic, makes this product has a pleasant light, smooth on initial flicker and long life.

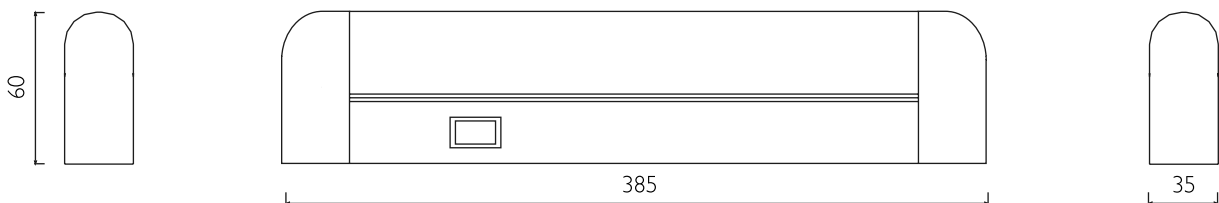
Slim line light tube T8 10W, 220 ~ 240V, 50 HZ and On-Off switch.

→ [FOR MORE INFORMATION CLICK HERE](#)

FEATURES

- Power 10W - Tube T8
- Voltage 220 - 240V
- Frequency 50 Hz
- ON/OFF switch
- Instant start and freedom of flashes
- Light and durable housin
- No produces stroboscopic effect
- Fixing by screws on both the wide and narrow sides

DIMENSIONS AND REFERENCES



SLIM LINE LIGHT 10W

REFERENCE	DESCRIPTION	DEPTH (mm)	HIGH (mm)	WIDTH (mm)
MVCLGT2312	Slime line light 10W	35	60	385

FLUORESCENT LIGHTING SCHUKO I IW



Example



It Has a Schuko Socket

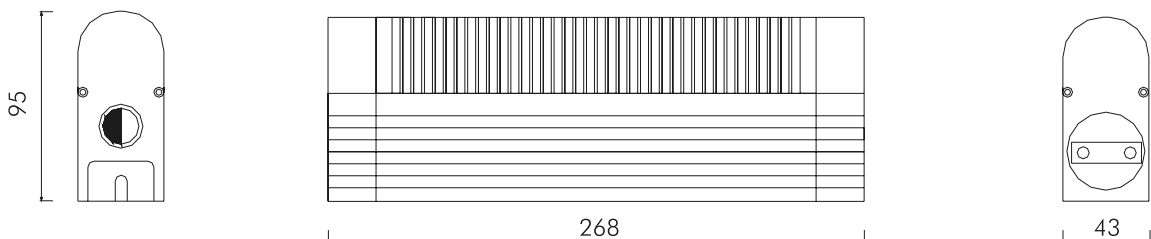
Fluorescent lighting schuko IP20 solves lighting problems in enclosures. With its integrated electrical socket allows the use of electronic devices during maintenance. Fitted with schuko socket and switch, it can be mounted with clips on DIN rail, on a bracket with screws or with magnetic fixing.

➔ [FOR MORE INFORMATION CLICK HERE](#)

FEATURES

- Power 11W
- Schuko socket 6 A
- Luminosity 900 LM
- Voltage 230V
- Service life 5000 H
- Weight 760 g
- Operating temperature -20 a +50 °C
- Switch ON/OFF
- Connection: 3-pole terminal for 1.5 mm² wire
- Aluminum housing
- Protection degree IP20 - EN60529
- Clip on DIN rail, magnet or bracket
- Low power consumption lamp

DIMENSIONS AND REFERENCES



FLUORESCENT LIGHTING SCHUKO I IW

REFERENCE	DESCRIPTION	DEPTH (mm)	HIGH (mm)	WIDTH (mm)
MVLC2701	Fluorescent lighting schuko I IW	43	95	268

LED LIGHTING SCHUKO 5W



Example



**It Has a Schuko Socket,
With Greater Energy Saving**

LED lighting schuko IP20 are the alternative to traditional fluorescent tubes for lighting enclosures and cabinets. LED technology offers high energy efficiency, low environmental impact, long life with high resistance to shock and vibration, and require no maintenance.

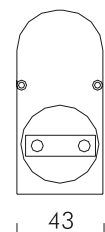
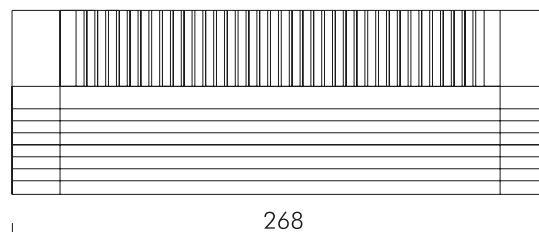
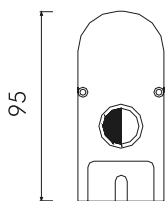
It can be mounted with clips on DIN rail, on a bracket with screws or with magnetic fixing.

→ [FOR MORE INFORMATION CLICK HERE](#)

FEATURES

- Power 5W
- Schuko socket 6 A
- Luminosity 380 LM
- Voltage 100-230V
- Service life 45000 H
- Weight 760 g
- Operating temperature -20 a +60 °C
- Switch ON/OFF
- Connection: 3-pole terminal for 1.5 mm² wire
- Aluminum housing
- Protection degree IP20
- Clip on DIN rail, magnet or bracket
- Low power consumption lamp

DIMENSIONS AND REFERENCES



LED LIGHTING SCHUKO 5W

REFERENCE	DESCRIPTION	DEPTH (mm)	HIGH (mm)	WIDTH (mm)
MVCLGL233	LED lighting schuko 5W	43	95	268

LED LIGHTING WITH MOTION SENSOR 2.5W

Slim, High Efficiency Enclosure LED Lamp With Motion Sensor



Examples



Wide voltage range from 20VDC up to 265VAC in a single model.

Spring terminal. More units can be connected together in a chain.

Fixing clips in each model permit to rotate the lamp according to lighting needs.

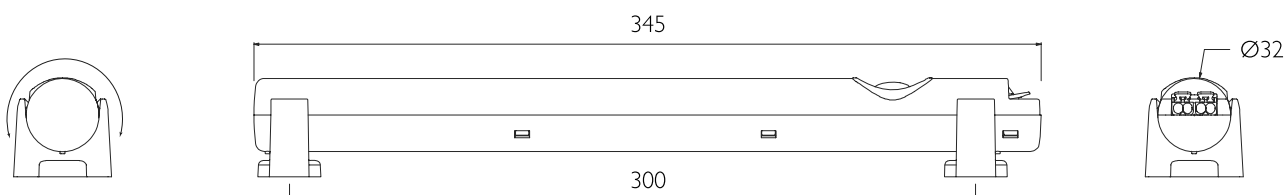
Magnet fixing or screw fixing. Motion sensor or switch ON/OFF available.

➔ [FOR MORE INFORMATION CLICK HERE](#)

FEATURES

- Casing: plastic
- Power supply 24-48 VDC / 100-240 VAC 50-60 Hz
- Luminosity 400 LM
- Power consumption 2.5 W
- Service life (20 °C) 60000 H
- Electrical connection 2-poles spring terminals (0.5-2.5mm)
- Protection degree IP20
- Operating temperature -30/+60 °C
- Storage temperature -40/+85 °C
- Conformity/Certifications CE and UL

DIMENSIONS AND REFERENCES



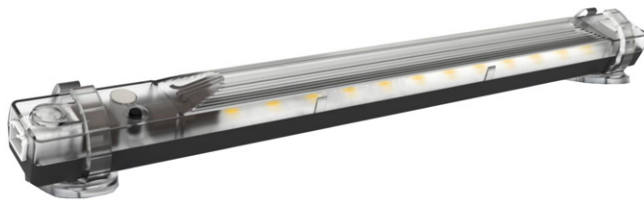
LED LIGHTING WITH MOTION SENSOR 2.5W

REFERENCES	DESCRIPTION	WEIGHT (g)
MVCLGT320IT	ON/OFF switch and screw fixing	155
MVCLGT320I	ON/OFF switch and magnet fixing	175
MVCLGT320ITS	Motion sensor (5min switched on after last detection) and screw fixing	155
MVCLGT320IS	Motion sensor (5min switched on after last detection) and magnet fixing	175

LED LIGHTING MULTIPOSITION 6W



Greater Energy Saving and Multiposition



Example



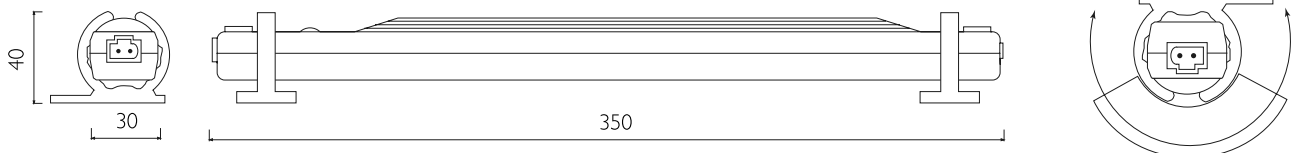
LED lighting multiposition IP20 are the alternative to traditional fluorescent tubes for lighting enclosures and cabinets. LED technology offers high energy efficiency, low environmental impact, long life with high resistance to shock and vibration, and require no maintenance. We have two models: with motion sensor or without motion sensor.

→ [FOR MORE INFORMATION CLICK HERE](#)

FEATURES

- Power 6W
- Luminosity 700 LM
- Voltage 24-265 V
- Service life 50000 H
- Weight 150 g
- Operating temperature -20 a +60 °C
- 90% humidity (non-condensing)
- Wieland plug connector
- Low power consumption lamp
- Magnet and screw fixing
- Multifunction button
- It has three positions
- Aprovals CE and UL
- Protection degree IP20

DIMENSIONS AND REFERENCES



LED LIGHTING MULTIPOSITION 6W

REFERENCES	DESCRIPTION	DEPTH (mm)	HIGH (mm)	WIDTH (mm)
MVCL6L232	LED lighting without motion detector	30	40	350
MVCL6L232.S	LED lighting with motion detector and switch off time	30	40	350

CUSTOMIZED ENCLOSURE SOLUTIONS DELVALLE

Delvalle has more than 45 years of experience using the latest technology to implement and obtain the most innovative products on offer to all our customers. Delvalle is an ideal partner, combining an advanced and wide range of products at very competitive prices.

The customized manufacture of all electrical enclosures and cabinets Delvallebox is carry out with the most advanced technical methods and with the precision and consciousness of a craftsman. This makes the difference from competitors and is the best way to gain our customers' trust.

In Delvallebox we bear in mind that customers perceive the quality very clearly. In every product (for instance, in the cabinets here presented) safety and useful solutions are what customers value most.



STAINLESS STEEL
INDUSTRIAL ENCLOSURES



OUTDOOR ELECTRICAL
ENCLOSURES



GLOBAL ELECTRICAL
SOLUTIONS FOR URBAN AREAS



GALVANIZED STEEL
ELECTRICAL ENCLOSURES

ATEX INDUSTRIAL ENCLOSURES

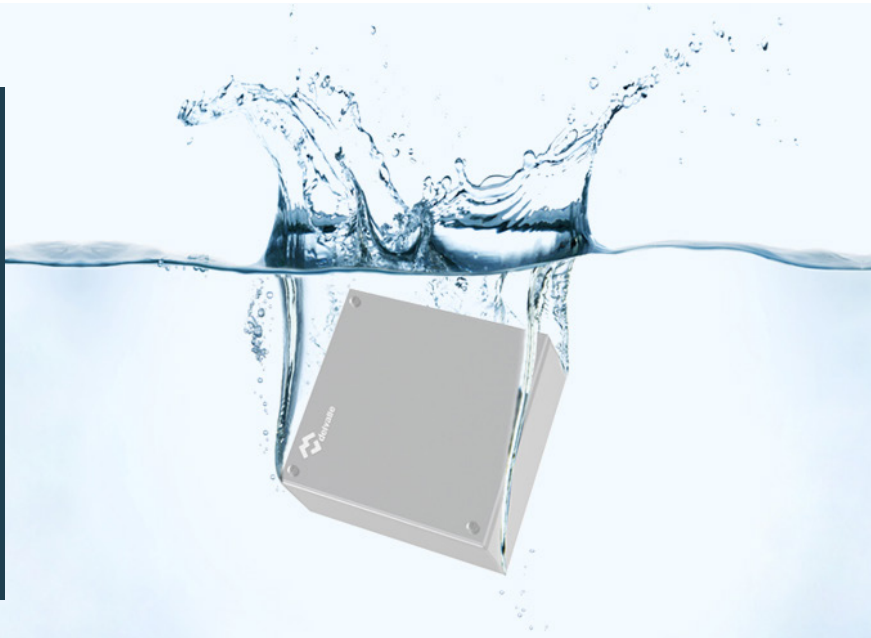


SLOPED ROOF
ENCLOSURES - HYGIENIC



INDUSTRIAL ENCLOSURES IP66, IP67, IP68 AND IP69K

Buy direct from manufacturer of custom made IP66, IP67, IP68 and IP69K heavy duty industrial and waterproof electrical enclosures AISI 304L and 316L made by standard IEC 60529. Delvalle has tested all sizes and dimensions of waterproof enclosures according to EN 60529:2018. All weather resistant enclosures are more than simply rainproof, they meet a minimum of Nema 4X and IP66, IP67, IP68 and IP69k requirements to ensure your electronics are protected. From Junction boxes to industrial enclosures, Delvalle weatherproof enclosures offer a wide range of sizes and styles to keep your project waterproof.



CLIMATE CONTROL COOLING FOR ENCLOSURES



CABLE GLANDS FOR
ELECTRICAL ENCLOSURES





INDUSTRIAL ENCLOSURE SOLUTIONS



Paso del Prao, 6. 01320 Oyón (Álava). Spain
Phone +34 945 601 381
comercial@delvalle.es | www.delvallebox.com
Contact us, we will be available at any time