



Enclosures & Cabinets for Special Requirements  
comercial@delvalle.es | www.delvallebox.com

# METRIC STAINLESS STEEL CABLE GLANDS

## HYGIENIC SERIES

IP68

IP69K





## WE PUT AT YOUR DISPOSAL

We offer over **45 years** providing solutions to demanding customers who require very specific characteristics and behaviour according to the sector and their needs.

## WHEREVER YOU GO

We are committed to working closely with our customers, providing them with **exceptional service** and offering an advanced and extensive range of products with very competitive prices.

## HIGH STANDARD OF QUALITY AND SERVICES

We only use materials provided by companies who offer the very **highest quality**, suitable and certified products. Our success is due to top quality assurance: ISO 9001, SGS, UL, TÜV, ISO 14000 and Ohsas 18001.

## CUSTOMIZE TOTALLY YOUR ENCLOSURE

Our production systems can give custom-made solutions **on demand**. Every colour from RAL chart is available to be personalized. A variety of protection standards thanks to our own painting facilities.

## CONTACT US

Confidentiality, reliability & quality

[www.delvallebox.com](http://www.delvallebox.com)  
[comercial@delvalle.es](mailto:comercial@delvalle.es)  
 +34 945 601 381

ALSO ONLINE

## Please contact our technical sales department

A team of professionals with high experience and ability to solve all your queries





Examples

## Hygienic Glands Are Fit Any Cabinet Where Protection Against Dirt Required

Hygienic glands are fit for passing, pressing and fixing cables between two compartments such as junction boxes, electric enclosures or any cabinet where protection against dust, dirt or water is required.

With a wide variety and the best quality on the market, we offer customized solutions for each case. We can just send you the glands, or even fix them on your enclosure at your request.

Made in stainless steel, hygienic glands are a definite solution against dirt and germs. They are the only glands tested according to EMC, FDA and EHEDG standards. We have the widest range from M12 to M25 and the highest quality.



[FOR MORE INFORMATION CLICK HERE](#)

## APPLICATIONS

Delvalle stainless steel hygienic glands are employed in those areas where cleanliness and hygiene are essential. Preventing an accumulation of dirt is vital in:

- Manufacturing and packaging of food and pharmaceuticals.
- Clean room technology.
- Biotechnology.
- Chemical industry.

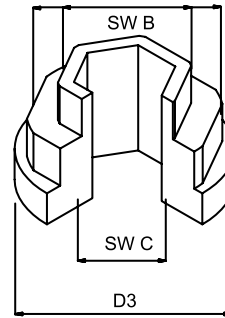
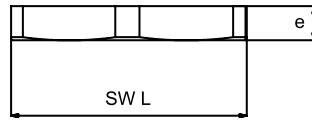
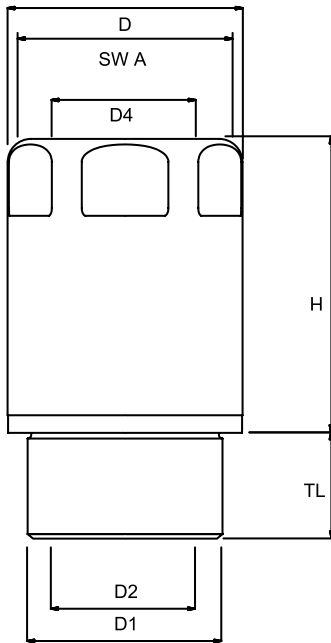
## NORMATIVE

- Protection:
  - IP68 (5 bar, 30 min) according EN 60529
  - IP69K extend IEC 60529
- Temperature resistance:
  - -20°C to +100°C
  - -40°C to +150°C short time

## CHARACTERISTICS

- Material: Stainless steel AISI303L (other materials on request).
- Thread: TPE according to FDA guideline 21 CFR 177.2600 (PG and NPT upon request).
- EMC version.
- Benefits
  - Smooth finish prevents harmful microorganisms sticking to the surface.
  - No threads are exposed. Cleaning of cable glands is easier, faster and less expensive compared to traditional stainless steel cable glands.
  - Reliable strain relief due to strain relief element separated from grommet.
  - Suitable for high pressure steam cleaning.

PLAN AND REFERENCES



REFERENCES METRIC STAINLESS STEEL HYGIENIC CABLE GLANDS

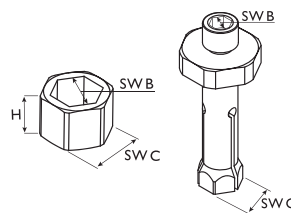
REFERENCE CABLE GLANDS + LOCK NUT	THREAD	CABLE CLAMPING RANGE (mm)	CABLE GLANDS DIMENSIONS								LOCK NUT DIMENSIONS		
			SWA (mm)	D (mm)	D1 (mm)	D2 (mm)	D4 (mm)	H (mm)	TL (mm)	CAP TIGHTENING TORQUE NM	SWL (mm)	E (mm)	LOCKNUT TIGHTENING TORQUE NM
HDSS.12	M12x1,5	3,0-6,5	14	15,6	12	7,0	6,8	21,5	6	2,5	15	2,8	6,0
HDSS.16	M16x1,5	5,0-10,0	18	20,2	16	10,5	10,3	28,5	7	4,0	19	3,0	9,0
HDSS.20	M20x1,5	6,0-12,0	22	24,1	20	12,5	12,3	33,0	10	5,0	24	3,5	12,0
HDSS.25	M25x1,5	12,0-17,0	28	30,1	25	17,5	17,3	38	14	6,0	30	4	14,0

REFERENCES METRIC EMC STAINLESS STEEL HYGIENIC CABLE GLANDS

REFERENCE EMC CABLE GLANDS + LOCK NUT	THREAD	CABLE CLAMPING RANGE (mm)	CABLE GLANDS DIMENSIONS								LOCK NUT DIMENSIONS		
			SWA (mm)	D (mm)	D1 (mm)	D2 (mm)	D4 (mm)	H (mm)	TL (mm)	CAP TIGHTENING TORQUE NM	SWL (mm)	E (mm)	LOCKNUT TIGHTENING TORQUE NM
HDSS.16.EMC	M16x1,5	5,0-10,0	18	20,2	16	10,0	10,3	28,5	7	4,0	19	3,0	9,0
HDSS.20.EMC	M20x1,5	6,0-12,0	22	24,1	20	13,5	12,3	33,0	10	5,0	24	3,5	12,0
HDSS.25.EMC	M25x1,5	12,0-17,0	28	30,1	25	17,5	17,3	38,0	14	6,0	30	4,0	14,0

REFERENCES TIGHTENING TOOL

REFERENCE	THREAD	SWB (mm)	SWC (mm)	H (mm)
MVF9T-01	M12	5	7	5
MVF9T-02	M16	6	10	5
MVF9T-03	M20	8	13	8
MVF9T-04	M25	10	17	8



Available upon request

REFERENCES SPECIAL TOOL

REFERENCE	THREAD	SWB (mm)	SWC (mm)
MVFGST-02	M16	6	10
MVFGST-03	M20	8	13
MVFGST-04	M25	10	17



# Consult us without obligation

*Confidentiality, reliability & quality*

## DELVALLE OFFERS CUSTOMIZED SOLUTIONS

www.delvallebox.com  
comercial@delvalle.es  
+34 945 601 381

ALSO ONLINE

→ FOR MORE INFORMATION CLICK HERE

**STAINLESS STEEL INDUSTRIAL ENCLOSURES**



**OUTDOOR HEAVY DUTY ELECTRICAL ENCLOSURES**



**OUTDOOR TELECOM 19 RACKS & CABINETS**



**GALVANIZED STEEL ELECTRICAL ENCLOSURES**



**HYGIENIC DESIGN ENCLOSURES**



**ALUMINIUM ELECTRICAL ENCLOSURES**





**Consult us  
without obligation**

*Confidentiality, reliability & quality*

## DELVALLE OFFERS CUSTOMIZED SOLUTIONS

[www.delvallebox.com](http://www.delvallebox.com)

[comercial@delvalle.es](mailto:comercial@delvalle.es)

+34 945 601 381

ALSO ONLINE

→ [FOR MORE INFORMATION CLICK HERE](#)

### WATERPROOF SHEET STEEL ELECTRICAL ENCLOSURES



### CLIMATE CONTROL COOLING FOR ELECTRICAL ENCLOSURES



### NEMA ELECTRICAL ENCLOSURES TYPE 1-3R-4X-12



### MODULAR DISTRIBUTION ENCLOSURES



### EMC ELECTRICAL ENCLOSURES SOLUTIONS

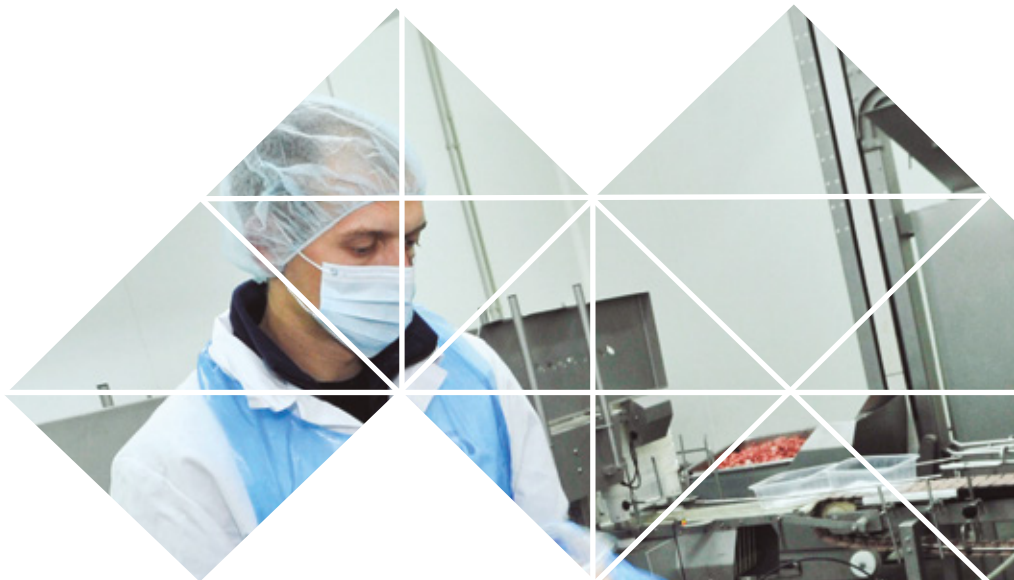


### CABLE GLANDS & ENTRY SEALS FOR CABINETS





Enclosures & Cabinets for Special Requirements



Paso del Prao, 6. 01320 Oyón (Álava). Spain  
P. +34 945 601 381  
[www.delvallebox.com](http://www.delvallebox.com) - [comercial@delvalle.es](mailto:comercial@delvalle.es)  
**Contact us, we will be available at any time**

