



comercial@delvalle.es | www.delvallebox.com

# STAINLESS STEEL INSTRUMENT ENCLOSURE RAMBO SERIES IP66



**10**  
YEARS

STAINLESS  
ANTICORROSIVE  
GUARANTEE

**5**  
YEARS

MECHANICAL PARTS  
GUARANTEE





## WE PUT AT YOUR DISPOSAL

We offer over **45 years** providing solutions to demanding customers who require very specific characteristics and behaviour according to the sector and their needs.

## WHEREVER YOU GO

We are committed to working closely with our customers, providing them with **exceptional service** and offering an advanced and extensive range of products with very competitive prices.

## HIGH STANDARD OF QUALITY AND SERVICES

We only use materials provided by companies who offer the very **highest quality**, suitable and certified products. Our success is due to top quality assurance: ISO 9001, SGS, UL, TÜV, ISO 14000 and Ohsas 18001.

## CUSTOMIZE TOTALLY YOUR ENCLOSURE

Our production systems can give custom-made solutions **on demand**. Every colour from RAL chart is available to be personalized. A variety of protection standards thanks to our own painting facilities.



**100%**  
Diseñado y fabricado íntegramente en España  
*Entirely designed and manufactures in Spain*

## CONTACT US

Confidentiality, reliability & quality

www.delvallebox.com  
comercial@delvalle.es  
+34 945 601 381

ALSO ONLINE



## Please contact our technical sales department

A team of professionals with high experience and ability to solve all your queries



# STAINLESS STEEL INSTRUMENT ENCLOSURE

## RAMBO SERIES IP66



Example

### The Rambo Series Designed for High Integrity Pressure Protection System

Stainless steel instrument enclosures Rambo Series is a specifically designed for “High Integrity Pressure Protection System” applications and “Safety Instrumented System”.

The engineering department of Delvalle is constructing and engineering solutions based upon customer specification. The main function of the modular manifold is to permanently ensure the continuity of information between the process fluid and the pressure sensors. Is a two-part enclosure with a diagonal opening, providing very easy access to field equipment for maintenance. Tube entry is typically made via the rear or the base. There are three sizes, each of which may be installed vertically or horizontally.

When vertically mounted, sizes range from 87 to 190 liters / 3.3 ft<sup>3</sup> to 6.6 ft<sup>3</sup>. Including diverse branches of connectors, cable-glands, terminal junction boxes, heaters, thermostats,...



[FOR MORE INFORMATION CLICK HERE](#)



## APPLICATIONS

Protect both the manifold itself and the control instrumentation connected to it, specifically in dust and harsh environments, outdoor climate condition (i.e. tropical, freezing, marine areas,...).

- Pressure instruments isolation for HPPS systems.
- Safety instrumented system.
- Instruments enclosures.



## ADVANTAGES

- Cost reduction for the construction of a high-pressure installation.
- Protection of the line from overpressure.
- Reduction of pollutant emissions into the atmosphere due to high-pressure lines.
- Until IP66. Protected from dust that may harm equipment. Protection against low pressure water jets.
- 10 years anticorrosive guarantee and 5 years mechanical parts guarantee.

## OPTIONS

- Custom made based on your needs.
- Manufactured in stainless steel AISI316L EN 14404.
- Option painted galvanized steel finish in RAL 7035 or another color.
- Internal insulation.
- Sunshades.
- Different windows: without windows, with plastic windows or with safety glass windows.
- Options breathing plugs, cable glands and plugs.
- Pedestal stands.
- Wall support.
- Tag plates, AISI 316 / Traffolyte.

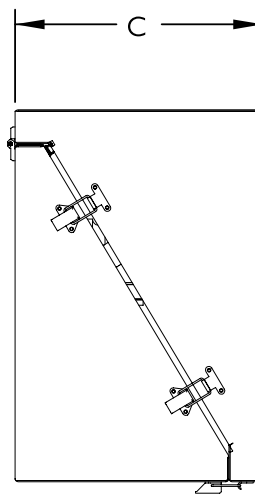
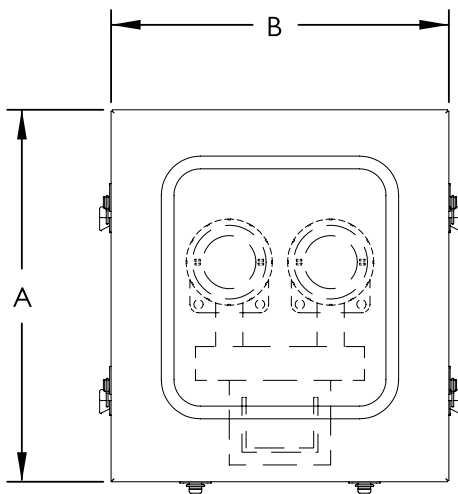
## NORMATIVE

- IP66 Norm IEC EN 62208 and EN 60529.
- Maximum IK10 resistance Norm IEC62208 and IEC 62262.
- Manufactured following EU low voltage ruling 2014/35/UE.
- Materials intended to come into contact with food EC 1935/2004.
- Reaction to fire tests – ignitability of products subjected to direct impingement of flame. UNE EN ISO 11925-2:2011.
- Reaction to fire tests for building products, exposed to the thermal attack by a single burning item UNE-EN 13823:2012.
- UV protection.
- RoHs Compliant.

# STAINLESS STEEL INSTRUMENT ENCLOSURE RAMBO SERIES IP66

## PLAN

➔ [CLICK HERE TO DOWNLOAD THE FILES CAD - PLANS - CERTIFICATES](#)



**5**  
YEARS

MECHANICAL PARTS  
GUARANTEE

**10**  
YEARS

STAINLESS  
ANTICORROSIVE  
GUARANTEE



## REFERENCES

REFERENCES RAMBO	INSTRUMENTS	DIMENSIONS (mm)		
REFERENCES	INTRUMENTS	HIGH - A -	WIDTH - B -	DEPTH - C -
VALV65558T	2	650	550	580
VALV658058T	3	650	800	580
VALV651058T	4	650	1000	580
Version: blind door		Remove the "T" from the reference. Ex: VALV651058		
Version: stainless steel AISI 316		Add "/316" to the reference. Ex: VALV651058T/316		

For the option painted galvanized steel finish in RAL 7035 or another color, please contact us.

## DELVALLE OFFERS CUSTOMIZED SOLUTIONS

[www.delvallebox.com](http://www.delvallebox.com)

[comercial@delvalle.es](mailto:comercial@delvalle.es)

+34 945 601 381

→ FOR MORE INFORMATION CLICK HERE

ALSO ONLINE

### STAINLESS STEEL INDUSTRIAL ENCLOSURES



### OUTDOOR HEAVY DUTY ELECTRICAL ENCLOSURES



### OUTDOOR TELECOM 19 RACKS & CABINETS



### GALVANIZED STEEL ELECTRICAL ENCLOSURES



### HYGIENIC DESIGN ENCLOSURES



### ALUMINIUM ELECTRICAL ENCLOSURES



## DELVALLE OFFERS CUSTOMIZED SOLUTIONS

www.delvallebox.com  
comercial@delvalle.es  
+34 945 601 381

→ FOR MORE INFORMATION CLICK HERE

ALSO ONLINE

### WATERPROOF SHEET STEEL ELECTRICAL ENCLOSURES



### CLIMATE CONTROL COOLING FOR ELECTRICAL ENCLOSURES



### NEMA ELECTRICAL ENCLOSURE TYPE 1-3R-4X-12



### MODULAR DISTRIBUTION ENCLOSURES



### EMC ELECTRICAL ENCLOSURES SOLUTIONS



### CABLE GLANDS & ENTRY SEALS FOR CABINETS





Paso del Prao, 6. 01320 Oyón (Álava). Spain

T. +34 945 601 381

comercial@delvalle.es | [www.delvallebox.com](http://www.delvallebox.com)

**Contact us, we will be available at any time**

