



Enclosures & Cabinets for Special Requirements
comercial@delvalle.es | www.delvallebox.com

STAINLESS STEEL WALL MOUNTED ENCLOSURE LUXOR SERIES AMPHIBOX IP67



10
YEARS
STAINLESS
ANTICORROSIVE
GUARANTEE

5
YEARS
MECHANICAL PARTS
GUARANTEE





WE PUT AT YOUR DISPOSAL

We offer over **45 years** providing solutions to demanding customers who require very specific characteristics and behaviour according to the sector and their needs.

WHEREVER YOU GO

We are committed to working closely with our customers, providing them with **exceptional service** and offering an advanced and extensive range of products with very competitive prices.

HIGH STANDARD OF QUALITY AND SERVICES

We only use materials provided by companies who offer the very **highest quality**, suitable and certified products. Our success is due to top quality assurance: ISO 9001, SGS, UL, TÜV, ISO 14000 and Ohsas 18001.

CUSTOMIZE TOTALLY YOUR ENCLOSURE

Our production systems can give custom-made solutions **on demand**. Every colour from RAL chart is available to be personalized. A variety of protection standards thanks to our own painting facilities.

CONTACT US

Confidentiality, reliability & quality

www.delvallebox.com
comercial@delvalle.es
 +34 945 601 381

ALSO ONLINE

Please contact our technical sales department

A team of professionals with high experience and ability to solve all your queries



STAINLESS STEEL WALL MOUNTED ENCLOSURE LUXOR SERIES AMPHIBOX IP67



Example

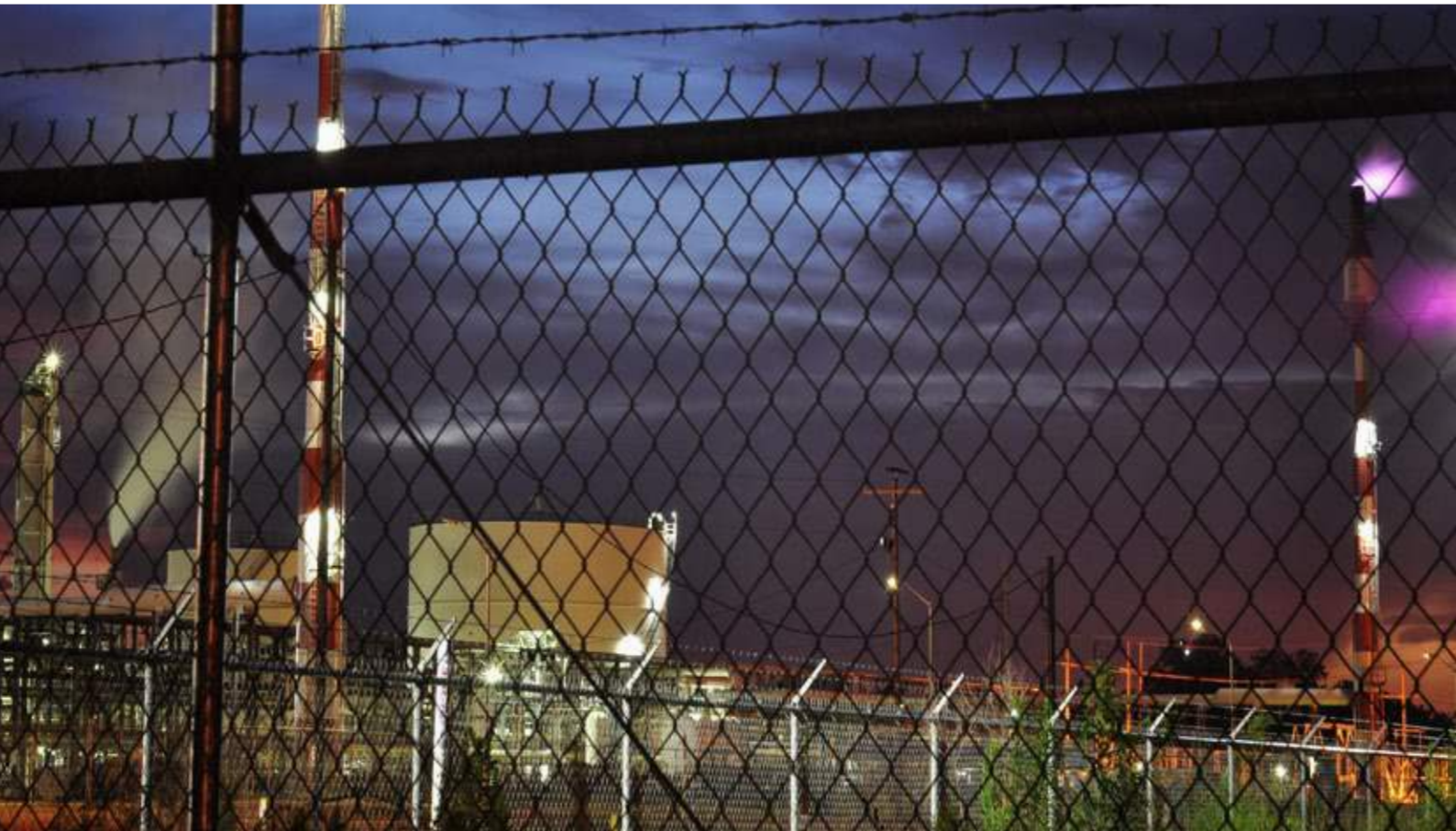
**We Offer a Perfect Seal
to Protect your Electrical
and Electronics Appliances**

New range IP67 wall electrical boxes made of stainless steel AISI 304L & AISI 316L, combine a number of features ideal for electrical and electronic applications where security and perfect sealing against dust and water are essential.

The most popular characteristic is the ease of dismantling by screws, with a revolving left door which allows the performance inside the frame without removal or loss of the door.



FOR MORE INFORMATION CLICK HERE



APPLICATIONS

This combination of strength and sealing characteristics make it ideal for electronic and electrical inner housing equipment in adverse environments outdoors.



OPTIONS

- Order by measure based on your needs.
- With a choice of two doors (from 800x600).
- We recommended using our stainless steel IP68 cable gland for cable entry.
- Manufactured in stainless steel AISI 316L EN 14404.
- Finished in textured paint other RAL colours on request.
- Mounting plate insulator (bakelite) or stainless steel.
- EMC electromagnetic protection seal between the frame and the contact surfaces, ensuring a perfect electrical connection 2014/30/UE.

NORMATIVE

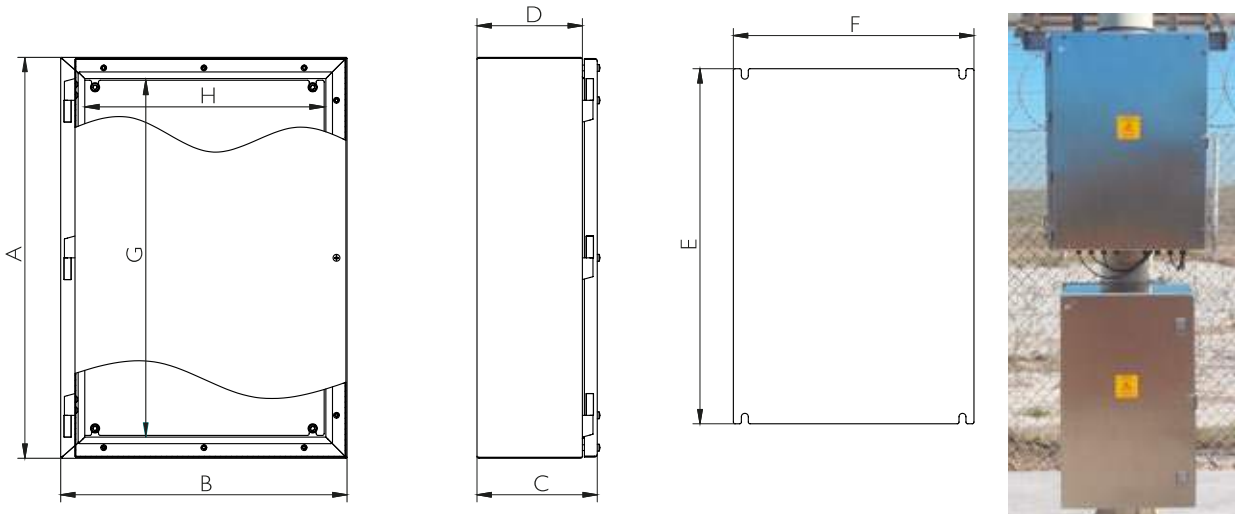
- IP67 Norm IEC EN 62208 and EN 60529. Submersible 1 meter during 30 minutes.
- Maximum IK10 resistance Norm IEC 62208 and EN 50102
- CE standards Low Voltage Directive 2014/35/UE.
- Maximum voltage 1000V
- RoHs compliant.
- Temperature resistant: -40°C +100°C (short time +160°C).
- Option silicone gasket: from -60°C to +180°C (short time up to +350°C).

ADVANTAGES

- Sealing allows total protection against dust and water in 1 meter during 30 minutes.
- This type of boxes combine corrosion resistance and the highest market impact IK10.
- The manufacture of the stainless steel monobloc allows sealing and the maximum resistance.
- With flashing channel that avoids contact with the liquid polyurethane gasket.
- Supplied with protective film prevents scratches and abrasions during handling.
- Total protection against dust and water.
- The most robust solution. Inox AISI 304L or AISI 316L.
- IP67 Approval.

PLAN

CLICK HERE TO DOWNLOAD THE FILES CAD - PLANS - CERTIFICATES



5
YEARS
MECHANICAL PARTS
GUARANTEE

10
YEARS
STAINLESS
ANTICORROSIVE
GUARANTEE

REFERENCES

REFERENCES	DIMENSIONS (mm)											
	BLIND DOOR	HEIGHT -A-	WIDTH -B-	DEPTH -C-	ACCESS -GxH-	DEPTH USEFUL -D-	MACHINABLE AREA			PLATE MEASUREMENT -ExF-	WEIGHT (Kg)	VOLUME (m³)
							DOOR	SIDE	DOWN			
MVAB302015/67	300	200	155	226x121	129	215,5x110,5	270x99	99x170	220x120	4,602	0,01	
MVAB383015/67	380	300	155	306x221	129	295,5x210,5	350x99	99x270	300x220	7,624	0,02	
MVAB383021/67	380	300	210	306x221	184	295,5x210,5	350x154	154x270	300x220	8,517	0,03	
MVAB404021/67	400	400	210	326x321	184	315,5x310,5	370x154	154x370	320x320	11,148	0,04	
MVAB504021/67	500	400	210	426x321	184	415,5x310,5	470x154	154x370	420x320	13,49	0,05	
MVAB505021/67	500	500	210	426x421	184	415,5x410,5	470x154	154x470	420x420	16,201	0,06	
MVAB705021/67	700	500	210	626x421	184	615,5x410,5	670x154	154x470	620x420	21,504	0,08	
MVAB603815/67	600	380	155	526x301	129	515,5x290,5	570x99	99x350	520x300	13,792	0,06	
MVAB603821/67	600	380	210	526x301	184	515,5x290,5	570x154	154x350	520x300	15,082	0,06	
MVAB605021/67	600	500	210	526x421	184	515,5x410,5	570x154	154x470	520x420	18,853	0,07	
MVAB606021/67	600	600	210	526x521	184	515,5x510,5	570x154	154x570	520x520	21,962	0,08	
MVAB806030/67	800	600	300	726x521	274	715,5x510,5	770x244	244x570	720x520	31,342	0,16	
MVAB808030/67	800	800	300	726x721	274	620x620	770x244	244x770	720x720	39,78	0,21	
MVAB108030/67	1000	800	300	960x721	274	820x620	970x244	244x720	920x720	50,418	0,26	
MVAB128030/67	1200	800	300	1126x721	274	1020x620	1170x244	244x770	1120x720	59,247	0,31	
MVAB101030/67	1000	1000	300	926x921	274	820x820	970x244	244x970	920x920	60,85	0,32	
MVAC121230/67	1200	1200	300	1126x1121	274	1020x1020	1170x244	244x1170	1120x1120	83,58	0,39	

Version: Norm UL Add "UL" to reference. Ex. "MVAC121230/67UL"

Separation depth plate 20mm



**Consult us
without obligation**

Confidentiality, reliability & quality

DELVALLE OFFERS CUSTOMIZED SOLUTIONS

www.delvallebox.com

comercial@delvalle.es

+34 945 601 381

ALSO ONLINE

→ FOR MORE INFORMATION CLICK HERE

STAINLESS STEEL
INDUSTRIAL ENCLOSURES



OUTDOOR HEAVY DUTY
ELECTRICAL ENCLOSURES



OUTDOOR TELECOM 19
RACKS & CABINETS



GALVANIZED STEEL
ELECTRICAL ENCLOSURES



HYGIENIC DESIGN ENCLOSURES



ALUMINIUM ELECTRICAL
ENCLOSURES



DELVALLE OFFERS CUSTOMIZED SOLUTIONS

➔ [FOR MORE INFORMATION CLICK HERE](#)

www.delvallebox.com

comercial@delvalle.es

+34 945 601 381

ALSO ONLINE

**WATERPROOF SHEET STEEL
ELECTRICAL ENCLOSURES**



**CLIMATE CONTROL COOLING
FOR ELECTRICAL ENCLOSURES**



**NEMA ELECTRICAL
ENCLOSURES TYPE 1-3R-4X-12**



**MODULAR DISTRIBUTION
ENCLOSURES**



**EMC ELECTRICAL
ENCLOSURES SOLUTIONS**



**CABLE GLANDS & ENTRY
SEALS FOR CABINETS**





Enclosures & Cabinets for Special Requirements



Paso del Prao, 6. 01320 Oyón (Álava). Spain
P. +34 945 601 381
www.delvallebox.com - comercial@delvalle.es
Contact us, we will be available at any time

